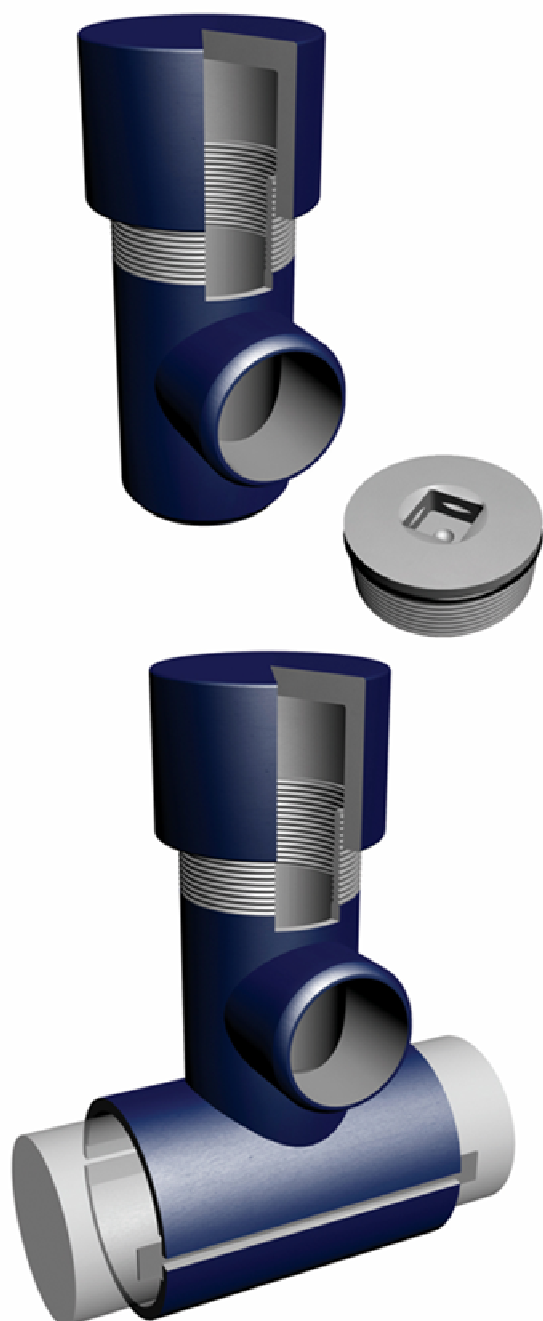


3 Way Tee Fittings

Threaded Plug



The **THREADED 3 WAY TEE** fittings are designed for main relocations, lateral connections, line extensions, equipment tie-ins, linestop operations, all without shut-down.

The **THREADED 3 WAY TEE** fitting includes a threaded internal plug with O-ring, an external cap and a flat bottom nipple. They are available in sizes 1-1/4", 1-1/2", 2", 3" and in Class 150, 300, 600 and 900. The **THREADED 3 WAY TEE** fittings are designed to be used with the equipment Hot-Tap equipment TBL-182TH, TBL-242TH and TBL-302TH. They allow to plug in different directions.

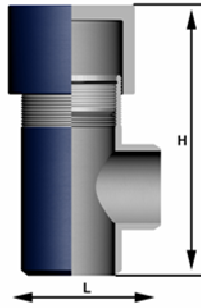
According to the size of the main pipe, the **THREADED 3 WAY TEE** fittings need an additional reinforcement like a: **Weldolet or Pad**. The reinforcement is according to the client's specifications. If the **THREADED 3 WAY TEE** fitting has the same size than the main pipeline (size-on-size), the threaded 3 way fitting needs a full encirclement reinforcement (right). In case there is no reinforcement needed, TECPESA also manufactures this fitting with a scarfed or flat bottom ending.

All fittings are stamped with a code number for material identification. Material certificates are included.

The quality control is according to the client's specifications. Radiography testing, Ultra Sonic test, Magnetic Particle examination, Hydrostatic Testing, Physical Testing are available.

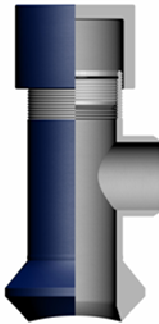


We stay in line

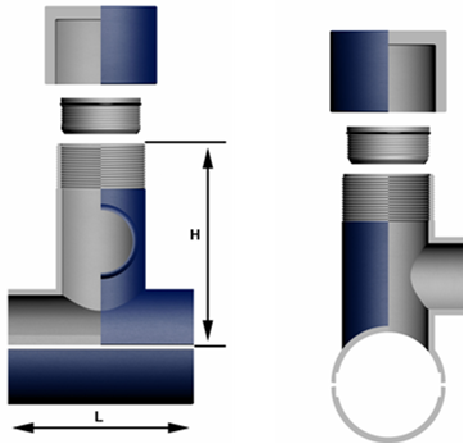


FLAT BOTTOM THREADED 3 WAY TEE

Size		Weight		H		L		Class 150	Class 300	Class 600
inch	mm	kg	inch	mm	inch	mm	Stock Number	Stock Number	Stock Number	
2	50	2,5	5	130	3,2	81	02.150.01.0000.01.01	02.300.01.0000.01.01	02.600.01.0000.01.01	
3	80	5,5	8	203	4,7	121	03.150.01.0000.01.01	03.300.01.0000.01.01	03.600.01.0000.01.01	



According to the client's specification, TECPESA can manufacture both types of reinforcement: **Weldolet** (left) or **Pad** (right)



FULL ENCIRCLEMENT THREADED 3 WAY TEE

Size		Weight		H		L		Class 150	Class 300	Class 600
inch	mm	kg	inch	mm	inch	mm	Stock Number	Stock Number	Stock Number	
2	50	5	8	203	5,5	140	02.150.01.0202.01.01	02.300.01.0202.01.01	02.600.01.0202.01.01	
3	80	9	11	279	7,2	184	03.150.01.0203.01.01	03.300.01.0203.01.01	03.600.01.0203.01.01	

The figures indicated on the chart above may change
 All details of the spare parts (O-ring, internal plug, etc...) are available in the Bulletin Number: 2009.200.00